

THERMOSTATIC VALVE VT-VTS-VTFT SERIES

www.vmcitaly.com
www.vmc-usa.com



MAIN FEATURES:

Thermic sensor available at different working temperatures

INSTALLATION:

Between the separator tank, the cooler and the air-end housing

AVAILABLE VERSIONS:

With support for spin-on oil filter (VTFT) or without support for spin-on oil filter (VT-VTS) and 3 ways (VTS) or 4 ways (VT-VTFT)

MAINTENANCE:

Specific spare part kits are available for ordinary maintenance

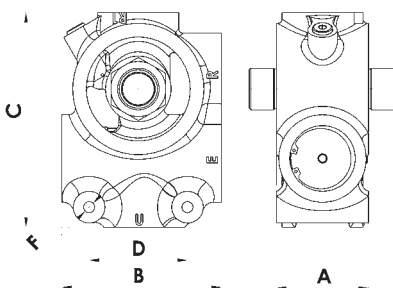
Thermostatic Valves VT-VTS-VTFT series are also available for Natural Gas and Water Lubricated applications.

VTFT TECHNICAL DATA		VTFT27 1/2"	VTFT27 3/4"	VT2FT37	VTFT47	VTFT57
Max Oil Flow rate	Lt/min-gal/min	45 - 11.9	80 - 21.15	140 - 37	180 - 47.5	360 - 95.1
Thread Connections		G 1/2"	G 3/4"	1"	Rp 1" 1/4	Rp 1" 1/2
Oil nipples Size		G 3/4"	G 3/4"	Nr. 2 x G3/4"	G 1-1/4"	Nr. 2 x G 1-1/4"
		1"-12 UNF	1"-12 UNF	Nr. 2 x 1"-12UNF	1-1/2" 16UN	Nr. 2 x 1-1/2" 16UN
Thermostat	°C	Three thermostat temperatures available: 55-70; 71-85 or 83-95				
Temperature Setting	°F	131-158; 159,8-185 or 181,4-203				
Materials		Housing in anodized Aluminium alloy. Inside parts in Brass and Viton sealings.				
A	mm - inch	60,8 - 2.4	60,8 - 2.4	63 - 2.5	68 - 2.67	84 - 3.3
B	mm - inch	95 - 3.75	95 - 3.75	122 - 4.8	125 - 4.9	146 - 5.75
C	mm - inch	107 - 4.2	107 - 4.2	142 - 5.6	182 - 7.16	197 - 7.76
D	mm - inch	50 - 2	50 - 2	60 - 2.36	70 - 2.75	90 - 3.55
F	mm - inch	Nr. 4xM8	Nr. 4xM8	Nr. 2xM10	Nr. 2xM12	Nr. 2xØ10,2
Weight	kg-lb	0,9 - 2	0,9 - 2	1,6 - 3.52	2,5 - 5.5	3,7 - 8.15

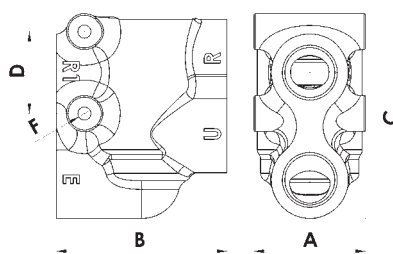
VT-VTS TECHNICAL DATA		VT27 1/2" VTS27 1/2"	VT27 3/4" VTS27 3/4"	VT37 VTS37	VTS47	VTS57
Max Oil Flow rate	Lt/min-gal/min	45 - 11.9	80 - 21.15	140 - 37	180 - 47.5	360 - 95.1
Thread Connections		Rp 1/2"	Rp 3/4"	Rp 1"	Rp 1-1/4"	Rp 1-1/2"
Thermostat	°C	Three thermostat temperatures available: 55-70; 71-85 or 83-95				
Temperature Setting	°F	131-158; 159,8-185 or 181,4-203				
Materials		Housing in anodized Aluminium alloy. Inside parts in Brass and Viton sealings.				
A	mm - inch	45 - 1.77	45 - 1.77	68 - 2.67	72 - 2.83	88 - 3.46
B	mm - inch	80 - 3.15	80 - 3.15	104 - 4.1	114 - 4.49	126 - 4.96
C	mm - inch	110 - 4.33	110 - 4.33	125 - 4.92	125 - 4.92	146 - 5.75
D	mm - inch	50 - 1.97	50 - 1.97	50 - 1.97	70 - 2.75	90 - 3.54
F	mm	Nr. 2xØ6,5	Nr. 2xØ6,5	Nr. 2xØ8,5	Nr. 2xØ10,2	Nr. 2xØ10,2
	inch	Nr. 2 x Ø0.25	Nr. 2 x Ø0.25	Nr. 2x Ø0.33	Nr. 2 x Ø0.4	Nr. 2 x Ø0.4"
Weight	kg-lb	0,7 - 1.55	0,7 - 1.55	1,2 - 2.64	1,2 - 2.64	1,9 - 4.2

Attention: The drawing below is not suitable for all models. Please log on to our website for specific drawings.

VTFT MODEL



VT MODEL



VTS MODEL

