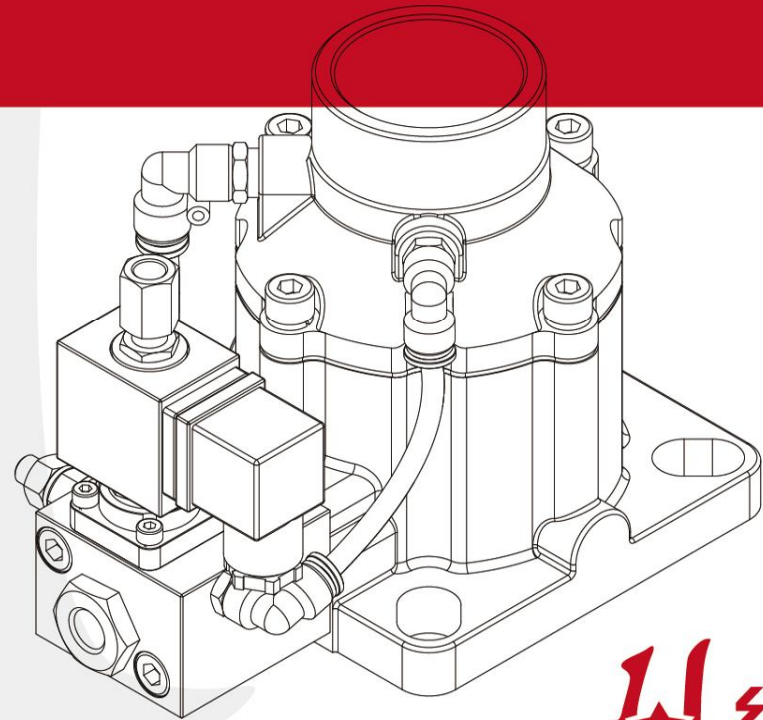


MANUFACTURING AIR COMPRESSOR PARTS



南通市红星空压机配件制造有限公司
Nantong Red Star Compressor Parts Manufacturing Co., Ltd.

地址：南通市通州区刘桥镇工业集中区（西区）
Add: Industrial Centralization Area West Zone,
Liuqiao Town, Tongzhou District, Nantong City
电话Tel: 86-513-86819688
传真Fax: 86-513-86819608
邮箱Email: sales@ntredstar.com
网址Website: www.ntredstar.com



南通市红星空压机配件制造有限公司
Nantong Red Star Compressor Parts Manufacturing Co., Ltd.

公司简介

COMPANY PROFILE



WHO WE ARE

南通市红星空压机配件制造有限公司成立于1995年，占地36660平方米，位于江海平原的沿海高速旁，是一家集研发、制造为一体的高新技术企业，并通过了ISO9001质量管理体系认证，是全国拥有专利最多的空压机配件生产厂商，具备完善的海陆空物流系统。

我们的产品 技术成熟 产品稳定

红星生产包括螺杆空压机进气阀、最小压力阀、组合阀、温控阀等系列产品。我们有专业的科技研发中心，在标准化的生产管理中，培育精益求精的工匠精神，增品种，提品质，创品牌，做值得您信赖的空压机配件。

品质体现 精益求精 追求卓越

拥有精良的实验室检测设备，实行严格的6S管理制度，配以先进的ERP生产管理系统，完善的金加工程序标准化管理、质量检验程序标准化管理和安全生产标准化管理，以及完善的售后管理体系，把握生产经营的主动性，在推动可持续发展的道路上，使得我们的产品远销海内外。

服务取胜 我们注重服务

在工业4.0时代，为应对市场快速创新的追求，灵活满足国内外不同客户的差异化需求，坚持并倡导以客户为中心的服务理念，无论是在生产现场还是售前售后服务中，换位思考，强化服务意识，并及时征询意见和建议，不断改进以提高公司的综合实力。

我们承诺 始终贯彻“以质量求生存，以创新求发展”的经营理念，与用户共同努力，致力于为客户提供性价比最高的空压机配件！

WHO WE ARE

Nantong Red Star Compressor Parts Manufacturing Co., Ltd. is an ISO9001 certified manufacturer which was founded in 1995. It covers 36660 square meters and is nearby coastal highway in Jianghai Plain with easy transportation. As a high-tech enterprise of manufacturing and R&D, Red Star possesses the largest number of patents for air compressor parts.

OUR PRODUCTS

Advanced Technologies & Stable Products

Red Star manufactures intake valves, minimum pressure valves, combination valves, thermostatic valves and other air compressor parts. With equipped professional R&D center, we foster a craftsmanship spirit of striving for the best in the management of production standardization. So that we will develop series, improve quality and create brand, to become the most reliable compressor parts manufacturer.

QUALITY EMBODIMENT

Excelsior Perfection & Be Remarkable

We have sophisticated test equipments, carry out strict 6S Management, use advanced ERP production management system including standardization management of well metal processing, quality control and safety production, together with goal of customer satisfaction services. We hold manufacturing initiatives in developing complete products line and potential domestic and global sales as well.

COMMITTED CUSTOMER SERVICE

Focused on Customer Service

In the age of Industry 4.0, with satisfying various demands, Red Star persists customer-centric service concept despite pre sales and after service. We strengthen our service awareness by transpositional considerations and adopt customers' feedback to improve our competitive strengths.

WE COMMITTED TO HOLD "Survive on Quality, Develop by Innovation" as the enterprise philosophy and provide the best air compressor valves to our customers. We are not satisfied until you are.



- 01.. 进气阀 Intake Valve
- 16.. 最小压力阀 Minimum Pressure Valve
- 23.. 正比例阀 Proportional Valve
- 24.. 组合阀 Combination Valve
- 27.. 温控油滤座 Thermostatic Valve Combined with Oil Filter Seat
- 29.. 油过滤器座 Oil Filter Seat
- 31.. 回油单向阀 Oil-return Check Valve
- 32.. 温控阀 Thermostatic Valve
- 33.. 油气分离器座 Air-oil Separator Seat
- 35.. 生产设备 Production Equipments
- 37.. 检测设备 Test Equipments
- 39.. 厂区图 Factory Facility

ADHERE TO INNOVATION
PURSUIT OF EXCELLENCE
坚持创新 追求卓越

CATALOG
目录

AIV SERIES INTAKE VALVE FOR POWER FREQUENCY OIL-INJECTED SCREW COMPRESSOR

AIV系列工频喷油螺杆空压机进气阀

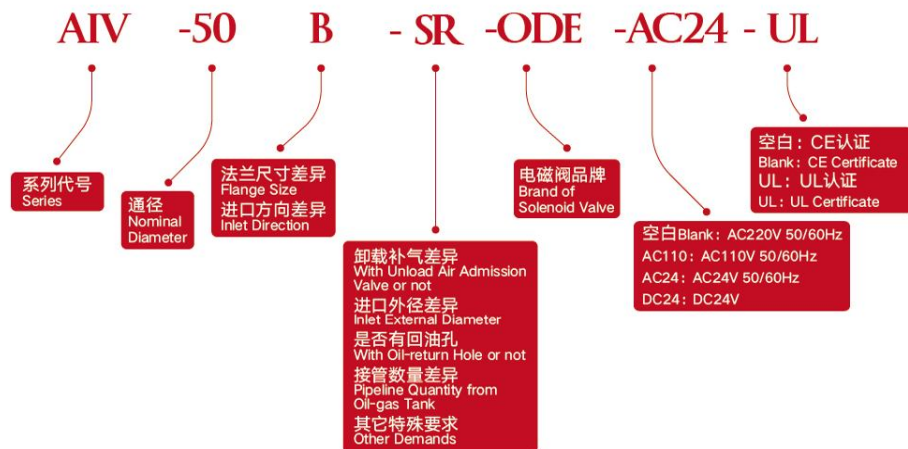
产品特性:

- 1、适用于工频喷油螺杆空气压缩机;
- 2、属常开式进气阀, 有控制压力信号输入, 进气阀关闭;
- 3、特殊的结构设计, 无一般常开式进气阀启动负荷大的问题;
- 4、全系进气阀具有止回功能, 在紧急停机的工况下, 也不会喷油;
- 5、进气阀具有卸载补气功能, 可以有效消除主机产生的气蚀噪音;
- 6、进气阀集成泄放阀、补气阀、电磁阀、比例阀, 安装方便、快捷。

Features:

1. Application: Power Frequency Oil-injected Screw Compressor
2. It's N/O type and will close in response to a control pressure signal.
3. Special structure design solves the problem of high start load.
4. At shutdown, intake valve has check function to prevent oil injection through the compressor.
5. Intake valve can eliminate cavitation noise from air-end by air admission when unloading.
6. Integration of discharge valve, air admission valve, solenoid valve and proportional valve into an intake valve makes it install easily and quickly.

型号说明 Model Description:

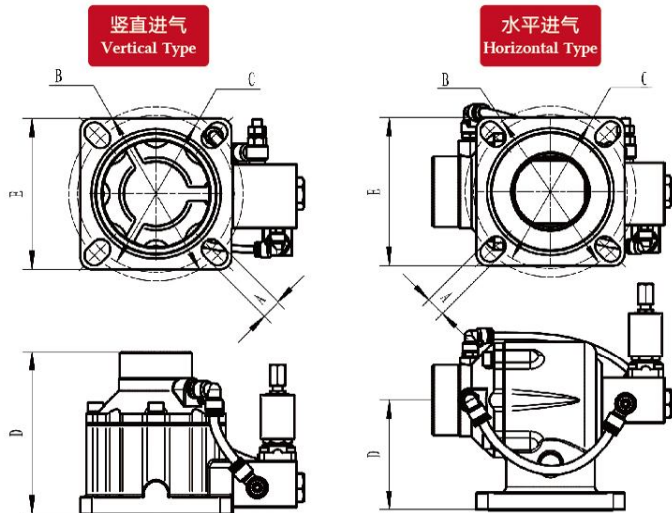


技术参数

Technic Data

型号前缀Model	AIV-25	AIV-40	AIV-50	AIV-65	AIV-85	AIV-100	AIV-120
口径(mm)Nominal Diameter(mm)	25	40	50	65	88	100	120
流量m³/min Flow(m³/min)	0.5~1.2	1~2.5	2.5~4.2	4~7	8~14	12~18	18~25
最高工作压力Max. Working Pressure(bar)	15						
工作介质温度(°C)Working Medium Temperature(°C)	-20 ~ 120						
工作环境温度(°C)Working Environment Temperature(°C)	-20 ~ 60						
止回功能Check Function	●	●	●	●	●	●	●
ON/OFF控制ON/OFF Control	●	●	●	●	●	●	●
流量无级控制Flow Stepless Control	—	—	○	○	●	●	●
卸载补气功能Unload Air Admission	○	○	●	●	●	●	○
电磁阀电源Power of Solenoid Valve	AC220V 50/60Hz (其它电源要求请联系我们Power can be alternative.)						
电磁阀认证Certificate of Solenoid Valve	CE (其它认证要求请联系我们Certificate can be alternative.)						
进气口方向Inlet Direction	竖直Vertical		竖直/水平Vertical/Horizontal			竖直Vertical	

● 标配With ○ 选配Optional — 无Without



RS SERIES INTAKE VALVE FOR POWER FREQUENCY OIL-INJECTED SCREW COMPRESSOR

RS系列工频喷油螺杆空压机进气阀

产品特性:

- 1、适用于工频喷油螺杆空气压缩机;
- 2、属常闭式进气阀, 有控制压力信号输入, 进气阀开启;
- 3、全系进气阀采用活塞式止回结构, 在紧急停机的工况下, 也不会喷油;
- 4、进气阀可以选配卸载补气功能, 可以有效消除主机产生的气蚀噪音;
- 5、进气阀集成泄放阀、反比例阀、补气阀(选配), 标配附件: 电磁阀与过滤器。

型号前缀 Model	进气口方向 Inlet Direction	A	B	C	D	E
AIV-25B	竖直Vertical	4- ϕ 9	62X55	53X53	75	75X80
AIV-25J	竖直Vertical	4- ϕ 6.5	ϕ 82	ϕ 78	84	80X80
AIV-25Y	竖直Vertical	4- ϕ 9	ϕ 116	ϕ 104	84	98X98
AIV-25L	竖直Vertical	3- ϕ 7.5	ϕ 72	—	84	ϕ 94
AIV-40B	竖直Vertical	4- ϕ 9	ϕ 116	ϕ 104	105	98X98
AIV-40C	竖直Vertical	4- ϕ 13	ϕ 135	ϕ 115	105	120X120
AIV-40D	竖直Vertical	4- ϕ 17	ϕ 150	ϕ 130	105	136X136
AIV-40F	竖直Vertical	4- ϕ 9	ϕ 135	ϕ 120	105	120X120
AIV-40G	竖直Vertical	4- ϕ 11	ϕ 135	ϕ 109	105	120X120
AIV-40J	竖直Vertical	4- ϕ 13	ϕ 160	ϕ 135	105	136X136
AIV-50B	竖直Vertical	4- ϕ 17	ϕ 150	ϕ 135	140.5	130X130
AIV-50C	竖直Vertical	4- ϕ 13	ϕ 135	ϕ 120	140.5	130X130
AIV-50R	竖直Vertical	4- ϕ 9	ϕ 125	ϕ 115	140.5	130X130
AIV-65C	竖直Vertical	4- ϕ 17	ϕ 170	ϕ 143	155.5	144X144
AIV-65R	竖直Vertical	4- ϕ 13	120X120	—	155.5	144X144
AIV-65Z	竖直Vertical	4- ϕ 13	ϕ 135	—	155.5	140X140
AIV-85B	竖直Vertical	4- ϕ 17	ϕ 180	ϕ 160	181.5	156X156
AIV-100C	竖直Vertical	8- ϕ 17	ϕ 225	ϕ 210	200	ϕ 255
AIV-120B	竖直Vertical	8- ϕ 17	ϕ 225	ϕ 210	249	ϕ 250
AIV-40A	水平Horizontal	4- ϕ 9	ϕ 116	ϕ 104	113	98X98
AIV-40E	水平Horizontal	4- ϕ 9	ϕ 116	ϕ 104	72	98X98
AIV-50A	水平Horizontal	4- ϕ 17	ϕ 150	ϕ 135	97	130X130
AIV-50E	水平Horizontal	4- ϕ 13	ϕ 135	ϕ 120	97	130X130
AIV-65A	水平Horizontal	4- ϕ 17	ϕ 170	ϕ 143	95	144X144
AIV-85A	水平Horizontal	4- ϕ 17	ϕ 180	ϕ 160	127	155X155
AIV-100A	水平Horizontal	8- ϕ 17	ϕ 225	ϕ 210	150	ϕ 255



Features:

1. Application: Power Frequency Oil-injected Screw Compressor
2. It's N/C type and will open in response to a control pressure signal.
3. Intake valve has piston type check structure to prevent oil injection through the compressor at shutdown.
4. Intake valve can eliminate cavitation noise from air-end with an optional air admission valve when unloading.
5. Discharge valve, proportional valve, optional air admission valve, solenoid valve and drain filter integrate an intake valve.

型号说明 Model Description:

RS - 120 N - F - ODE - AC24 - UL

RS: 气缸3.3bar全开
Cylinder fully open at 3.3bar
RSL: 气缸1.2bar全开
Cylinder fully open at 1.2bar

通径
Nominal
Diameter

N: 竖直进气
Vertical Inlet
A: 水平进气
Horizontal Inlet

卸载补气差异
With Unload Air Admission
Valve or not
法兰尺寸差异
Flange Size
是否有回油孔
With Oil-return Hole or not
其它特殊要求
Other Demands

空白: 不配电磁阀
及过滤器
Blank: Without Solenoid Valve
and Drain Filter

ODE: 电磁阀品牌
Brand of Solenoid Valve

空白: CE认证
Blank: CE Certificate
UL: UL认证
UL: UL Certificate

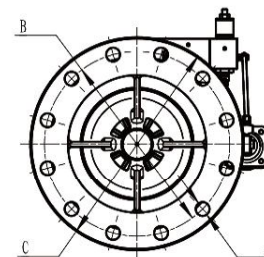
空白Blank: AC220V 50/60Hz
AC110: AC110V 50/60Hz
AC24: AC24V 50/60Hz
DC24: DC24V

技术参数

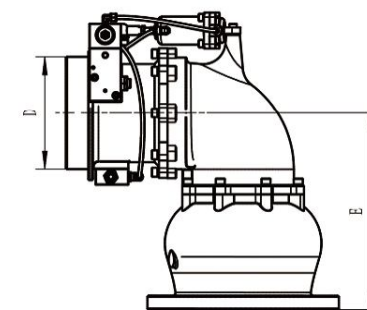
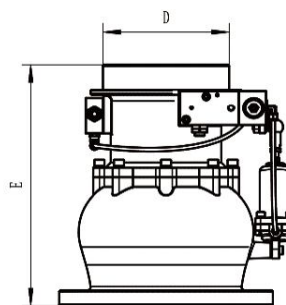
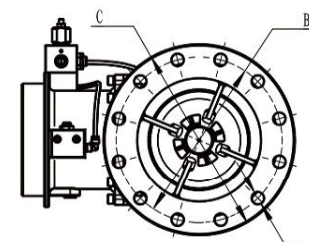
Technic Data

型号前缀 Model	RS-120N	RS-120A	RSL-120N	RS-160N	RS-160A	RSL-160N
通径(mm) Nominal Diameter(mm)	120	120	120	160	160	160
流量m ³ /min Flow(m ³ /min)	16~25	16~25	16~25	30~46	30~46	30~46
最高工作压力 Max. Working Pressure(bar)	15					
工作介质温度(°C) Working Medium Temperature(°C)	-20 ~ 120					
工作环境温度(°C) Working Environment Temperature(°C)	-20 ~ 60					
止回功能 Check Function	●	●	●	●	●	●
ON/OFF控制 ON/OFF Control	●	●	●	●	●	●
流量无级控制 Flow Stepless Control	●	●	●	●	●	●
卸载补气功能 Unload Air Admission	○	○	○	○	○	○
电磁阀电源 Power of Solenoid Valve	AC220V 50/60Hz (其它电源请联系我们Power can be alternative.)					
电磁阀认证 Certificate of Solenoid Valve	CE (其它认证请联系我们Certificate can be alternative.)					
过滤器排水 Drain Filter	手动排水Manual Operation (可选配差压排水或自动排水Optional Differential Pressure Operation and Automatic Operation)					
进气口方向 Inlet Direction	竖直Vertical	水平Horizontal	竖直Vertical	竖直Vertical	水平Horizontal	竖直Vertical
● 标配With ○ 选配Optional						

竖直进气
Vertical Type



水平进气
Horizontal Type



型号前缀 Model	进气口方向 Inlet Direction	A	B	C	D	E
RS-120N	竖直Vertical	8-ø18	ø225	ø255	ø150	302
RSL-120N	竖直Vertical	8-ø18	ø225	ø255	ø150	302
RS-120N-U	竖直Vertical	8-ø22	ø241.3	ø255	ø150	302
RS-160N	竖直Vertical	12-ø22	ø295	ø340	ø201	385.5
RSL-160N	竖直Vertical	12-ø22	ø295	ø340	ø201	385.5
RS-160N-A	竖直Vertical	8-ø22	ø295	ø340	ø201	385.5
RSL-160N-A	竖直Vertical	8-ø22	ø295	ø340	ø201	385.5
RS-160N-B	竖直Vertical	6-ø18	ø310	ø340	ø201	385.5
RS-120A	水平Horizontal	8-ø18	ø225	ø255	ø150	288
RS-160A	水平Horizontal	12-ø22	ø295	ø340	ø201	350

RH SERIES INTAKE VALVE FOR FREQUENCY INVERTER OIL-INJECTED SCREW COMPRESSOR

RH系列变频喷油螺杆空压机进气阀

产品特性:

- 1、适用于变频喷油螺杆空气压缩机;
- 2、有停机主机吸气口压力控制放空和电磁阀控制放空两种方式供选择;
- 3、全系进气阀采用重锤式止回结构, 压损小, 在紧急停机的工况下, 也不会喷油;
- 4、独有的泄放流道方向, 泄放时气流不会冲刷止回阀板;
- 5、进气阀集成泄放阀、电磁阀(电控方式), 安装方便、快捷。



Features:

1. Application: Frequency Inverter Oil-injected Screw Compressor
2. Release Mode: Controlled by Air-end Suction Port Pressure at Shutdown or by Solenoid Valve
3. Intake valve has hammer type check structure of low pressure loss to prevent oil injection through the compressor at shutdown.
4. Unique discharge flow channel direction leads airflow not to wash check valve plate during discharging.
5. Integration of discharge valve and electric control solenoid valve makes the intake valve install easily and quickly.

技术参数

Technic Data

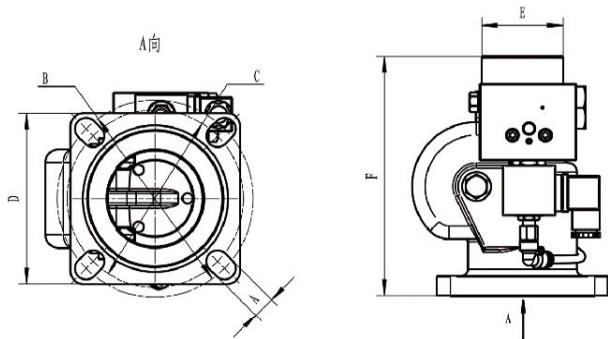
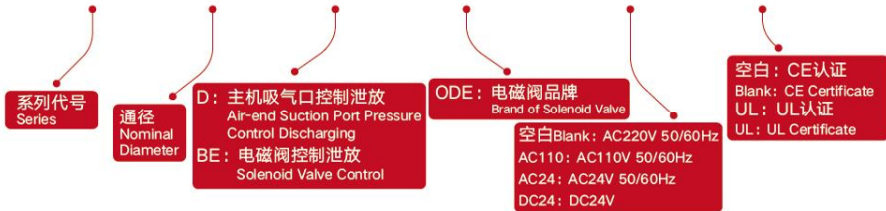
型号前缀 Model	RH-40D	RH-50D	RH-65D	RH-90D	RH-120D	RH-160D
口径(mm) Nominal Diameter(mm)	40	50	65	90	120	160
流量m ³ /min Flow(m ³ /min)	2~4.5	3~6	5~10	9~19	19~35	30~46
最高工作压力 Max. Working Pressure(bar)	15					
工作介质温度(°C) Working Medium Temperature(°C)	-20 ~ 120					
工作环境温度(°C) Working Environment Temperature(°C)	-20 ~ 60					
止回功能 Check Function	●	●	●	●	●	●
ON/OFF控制 ON/OFF Control	—	—	—	—	—	—
泄放控制方式 Discharge Mode	主机吸气口压力控制泄放阀动作Controlled by Air-end Suction Port Pressure					
电磁阀电源 Power of Solenoid Valve	—					
电磁阀认证 Certificate of Solenoid Valve	—					
进气口方向 Inlet Direction	竖直Vertical					

型号前缀 Model	RH-40BE	RH-50BE	RH-65BE	RH-90BE	RH-120BE	RH-160BE
口径(mm) Nominal Diameter(mm)	40	50	65	90	120	160
流量m ³ /min Flow(m ³ /min)	2~4.5	3~6	5~10	9~19	19~35	30~46
最高工作压力 Max. Working Pressure(bar)	15					
工作介质温度(°C) Working Medium Temperature(°C)	-20 ~ 120					
工作环境温度(°C) Working Environment Temperature(°C)	-20 ~ 60					
止回功能 Check Function	●	●	●	●	●	●
ON/OFF控制 ON/OFF Control	—	—	—	—	—	—
泄放控制方式 Discharge Mode	电磁阀控制泄放阀动作Controlled by Solenoid Valve					
电磁阀电源 Power of Solenoid Valve	AC220V 50/60Hz (其它电源请联系我们Power can be alternative.)					
电磁阀认证 Certificate of Solenoid Valve	CE (其它认证请联系我们Certificate can be alternative.)					
进气口方向 Inlet Direction	竖直Vertical					

● 标配With ○ 选配Optional — 无Without

型号说明 Model Description:

RH - 50 BE - ODE - AC24 - UL



型号前缀 Model	A	B	C	D	E	F
RH-40D	4-ø9	ø116	ø104	100X100	ø48	121
RH-50D	4-ø17	ø150	ø135	130X130	ø62	182
RH-65D	4-ø17	ø170	ø143	147X147	ø78	157
RH-90D	4-ø17	ø180	ø160	156X156	ø100	225
RH-120D	8-ø18	ø225	—	ø260	ø150	292
RH-160D-A	12-ø22	ø295	—	ø340	ø201	379
RH-40BE	4-ø9	ø116	ø104	100X100	ø48	121
RH-50BE	4-ø17	ø150	ø135	130X130	ø62	182
RH-65BE	4-ø17	ø170	ø143	147X147	ø78	182
RH-90BE	4-ø17	ø180	ø160	156X156	ø100	225
RH-120BE	8-ø18	ø225	—	ø260	ø150	292
RH-160BE-A	12-ø22	ø295	—	ø340	ø201	379

RH SERIES INTAKE VALVE FOR OIL-INJECTED SCREW COMPRESSOR

RH系列喷油螺杆空压机进气阀

产品特性:

- 1、适用于工频、变频喷油螺杆空气压缩机;
- 2、属常闭式进气阀, 有控制压力信号输入, 进气阀开启;
- 3、全系进气阀采用重锤式止回结构, 压损小, 在紧急停机的工况下, 也不会喷油;
- 4、进气阀控制气缸根据螺杆空压机工况自主设计, 正常动作寿命 > 100万次;
- 5、蝶阀阀杆与阀体配合处设计有防尘、防振圈, 可有效防止振动引起的磨损;
- 6、进气阀集成泄放阀、反比例阀, 标配附件: 电磁阀与过滤器。



Features:

1. Application: Power Frequency and Frequency Inverter Oil-injected Screw Compressor
2. It's N/C type and will open in response to a control pressure signal.
3. Intake valve has hammer type check structure of low pressure loss to prevent oil injection through the compressor at shutdown.
4. Self-design cylinder according to screw compressor working condition is at least one million standard operating cycles.
5. Design of dust ring and shockproof ring between butterfly valve stem and valve body can effectively prevent abrasion caused by vibration.
6. Discharge valve, proportional valve, solenoid valve and drain filter integrate an intake valve.

型号说明 Model Description:

RH - 160 N - A - ODE - AC24 - UL

RS: 气缸3.3bar全开
Cylinder fully open at 3.3bar
RSL: 气缸1.2bar全开
Cylinder fully open at 1.2bar

通径
Nominal Diameter

E: 没有流量无级控制功能
Without Flow Stepless Control Function
N: 具有流量无级控制功能
With Flow Stepless Control Function

空白: 不配电磁阀及过滤器
Blank: Without Solenoid Valve and Drain Filter
ODE: 电磁阀品牌
Brand of Solenoid Valve
法兰尺寸差异 Flange Size
排水方式差异 Drain Filter
其它特殊要求 Other Demands

空白: CE认证
Blank: CE Certificate
UL: UL认证
UL: UL Certificate

空白 Blank: AC220V 50/60Hz
AC110: AC110V 50/60Hz
AC24: AC24V 50/60Hz
DC24: DC24V

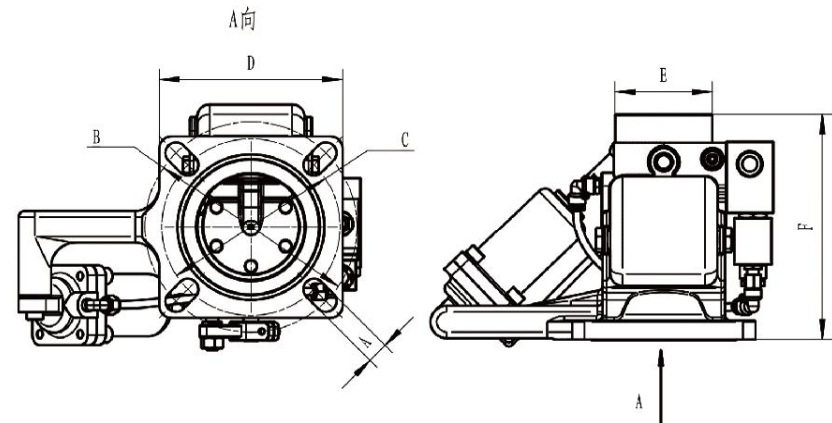
技术参数

Technic Data

型号前缀Model	RH-40E	RH-50E	RH-65E	RH-90E	RH-120E	RH-160E
通径(mm)Nominal Diameter(mm)	40	50	65	90	120	160
流量m ³ /min Flow(m ³ /min)	1.5~3.2	2.5~5	5~9	9~18	18~32	30~45
最高工作压力(bar)Max. Working Pressure(bar)	15					
工作介质温度(°C)Working Medium Temperature(°C)	-20 ~ 120					
工作环境温度(°C)Working Environment Temperature(°C)	-20 ~ 60					
止回功能Check Function	●	●	●	●	●	●
ON/OFF控制ON/OFF Control	●	●	●	●	●	●
流量无级控制Flow Stepless Control	—	—	—	—	—	—
电磁阀电源Power of Solenoid Valve	AC220V 50/60Hz (其它电源请联系我们Power can be alternative.)					
电磁阀认证Certificate of Solenoid Valve	CE (其它认证请联系我们Certificate can be alternative.)					
过滤器排水Drain Filter	—	—	—	—	—	—
气缸全开压力(bar)Cylinder Fully Open Pressure	RH: 3.3, RHL: 1.2(适用于低压螺杆空压机Apply to Low Pressure Screw Compressor)					
进气口方向Inlet Direction	竖直Vertical					

型号前缀Model	RH-90N	RH-120N	RH-160N	RH-200N	RH-240N
通径(mm)Nominal Diameter(mm)	90	120	160	204	240
流量m ³ /min Flow(m ³ /min)	9~18	18~32	30~45	45~70	68~90
最高工作压力Max. Working Pressure(bar)	15				
工作介质温度(°C)Working Medium Temperature(°C)	-20 ~ 120				
工作环境温度(°C)Working Environment Temperature(°C)	-20 ~ 60				
止回功能Check Function	●	●	●	●	●
ON/OFF控制ON/OFF Control	●	●	●	●	●
流量无级控制Flow Stepless Control	●	●	●	●	●
电磁阀电源Power of Solenoid Valve	AC220V 50/60Hz (其它电源要求请联系我们Power can be alternative.)				
电磁阀认证Certificate of Solenoid Valve	CE (其它认证要求请联系我们Certificate can be alternative.)				
过滤器排水Drain Filter	手动排水Manual Operation (可选配差压排水或自动排水Optional Differential Pressure Operation and Automatic Operation)				
气缸全开压力(bar)Cylinder Fully Open Pressure	RH: 3.3, RHL: 1.2(适用于低压螺杆空压机Apply to Low Pressure Screw Compressor)				
进气口方向Inlet Direction	竖直Vertical				

● 标配With ○ 选配Optional — 无Without



型号前缀Model	A	B	C	D	E	F
RH-40E	4-ø9	ø116	ø104	100X100	ø48	121
RH-50E	4-ø17	ø150	ø135	130X130	ø62	182
RH-65E	4-ø17	ø170	ø143	147X147	ø78	182
RH-90E	4-ø17	ø180	ø160	156X156	ø100	225
RH-120E	8-ø18	ø225	—	ø260	ø150	292
RH-160E-A	12-ø22	ø295	—	ø340	ø201	379
RH-160E-B	8-ø22	ø295	—	ø340	ø201	379
RH-160E-C	8-ø22	ø350	—	ø385	ø201	379
RH-160E-D	6-ø18	ø350	—	ø385	ø201	379
RH-90N	4-ø17	ø180	ø160	156X156	ø100	225
RH-120N	8-ø18	ø225	—	ø260	ø150	292
RH-160N-A	12-ø22	ø295	—	ø340	ø201	379
RH-160N-B	8-ø22	ø295	—	ø340	ø201	379
RH-160N-C	8-ø22	ø350	—	ø385	ø201	379
RH-160N-D	6-ø18	ø350	—	ø385	ø201	379
RH-200N-A	8-ø22	ø350	—	ø400	ø230	461
RH-200N-B	12-ø22	ø350	—	ø400	ø230	461
RH-200N-C	8-ø18	ø335	—	ø400	ø230	461
RH-200N-D	12-ø18	ø335	—	ø400	ø230	461
RH-200N-E	6-ø18	ø350	—	ø400	ø230	461
RH-200N-G	12-ø25	ø355	—	ø400	ø230	461
RH-240N-A	12-ø26	ø410	—	ø448	ø254	470
RH-240N-U	12-ø22	ø400	—	ø448	ø254	470

RH SERIES

AIVM SERIES INTAKE VALVE FOR PORTABLE OIL-INJECTED SCREW COMPRESSOR

AIVM系列移动喷油螺杆空压机进气阀

产品特性:

- 1、适用于移动喷油螺杆空气压缩机；
- 2、进气阀在移动螺杆空气压缩机启动时处于常闭状态，正常轻载启动完后，进气阀自动转换为常开状态，输入控制压力进气阀关闭，兼备常闭阀和常开阀的优点；
- 3、进气阀需要另外选配RT系列正比例阀，用于控制进气阀进行流量调节；
- 4、移动螺杆空气压缩机为内燃机驱动时，可以选配QGH-40L气缸用于控制内燃机油门；
- 5、全系进气阀具有止回功能，在紧急停机的工况下，也不会喷油；
- 6、进气阀具有卸载补气功能，可以有效消除主机产生的气蚀噪音；
- 7、进气阀集成泄放阀、补气阀，安装方便、快捷。



Features:

1. Application: Portable Oil-injected Screw Compressor
2. The intake valve is normally closed during start-up. After light load starting, it turns into a normally open condition and will close in response to a control pressure signal. This type has both advantage of N/C valve and N/O valve.
3. An optional RT series proportional valve should be assembled to an intake valve for flow adjusting.
4. Internal-combustion engine accelerator can be controlled by an optional cylinder QGH-40L when portable screw compressor is driven by the engine.
5. At shutdown, intake valve has check function to prevent oil injection through the compressor.
6. Intake valve can eliminate cavitation noise from air-end by air admission when unloading.
7. Integration of discharge valve and air admission valve into an intake valve makes it install easily and quickly.

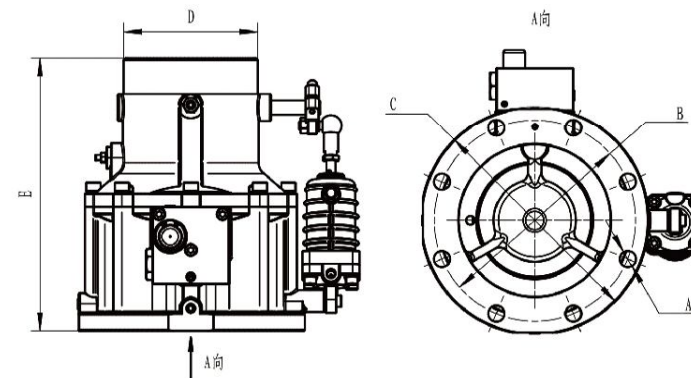
技术参数

Technic Data

型号前缀Model	AIVM-90B	AIVM-120B	AIVM-160B
口径(mm)Nominal Diameter(mm)	90	120	160
流量m ³ /min Flow(m ³ /min)	10~17	16~25	30~46
最高工作压力Max. Working Pressure(bar)	30		
工作介质温度(°C)Working Medium Temperature(°C)	-20 ~ 130		
工作环境温度(°C)Working Environment Temperature(°C)	-20 ~ 80		
止回功能Check Function	●	●	●
ON/OFF控制ON/OFF Control	●	●	●
流量无级控制Flow Stepless Control	●	●	●
卸载补气功能Unload Air Admission	●	●	●
进气口方向Inlet Direction	竖直Vertical	竖直Vertical	竖直Vertical

● 标配With

注：流量无级控制需要配套RT系列正比例阀使用
Note: Flow Stepless Control Function will be effected with RT series proportional valve.



型号前缀Model	A	B	C	D	E
AIVM-90B	4-φ18	φ170	156X156	φ100	269.5
AIVM-120B	8-φ18	φ225	φ255	φ150	305
AIVM-160B	8-φ22	φ350	φ400	φ201	370

SLF SERIES INTAKE VALVE FOR WATER LUBRICATING SCREW COMPRESSOR

SLF系列喷水螺杆空压机进气阀

产品特性:

- 1、适用于工频、变频喷水螺杆空气压缩机;
- 2、进气阀不具备止回功能;
- 3、属常闭式进气阀,有控制压力信号输入,进气阀开启;
- 4、进气阀阀体、气缸采用不锈钢材质,抗氧化、耐腐蚀;
- 5、可选配不锈钢泄放阀,配套使用效果更佳。

Features:

1. Application: Power Frequency and Frequency Inverter Water Lubricating Screw Compressor
2. Without Check Function
3. It's N/C type and will open in response to a control pressure signal.
4. Stainless steel material of intake valve body and cylinder provides intake valve anti-oxidation and corrosion resisting protection.
5. Optional stainless steel discharge valve is better.



技术参数

Technic Data

型号前缀Model	SLF-40	SLF-65	SLF-90	SLF-120	SLF-160
口径(mm)Nominal Diameter(mm)	40	65	90	120	160
最高工作压力Max. Working Pressure(bar)	20				
工作介质温度(°C)Working Medium Temperature(°C)	-20 ~ 80				
ON/OFF控制ON/OFF Control	●	●	●	●	●
止回功能Check Function	—	—	—	—	—
进气口方向Inlet Direction	竖直Vertical				
材质Material	不锈钢、黄铜、丁腈橡胶Stainless Steel, Brass, Nitrile Rubber				
安装尺寸Installation Dimension	请向我公司索取相关图纸Attached Drawing				

● 标配With ○ 选配Optional — 无Without

SMPV SERIES MINIMUM PRESSURE VALVE FOR WATER LUBRICATING SCREW COMPRESSOR

产品特性:

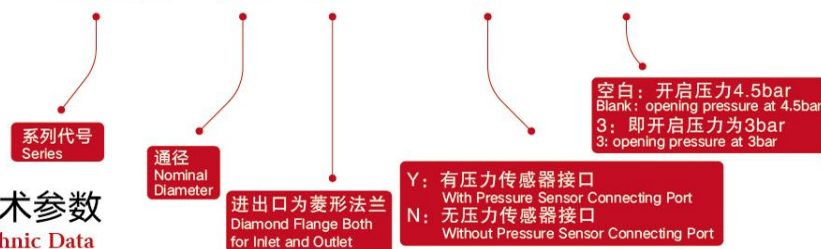
- 1、适用于喷水螺杆空气压缩机;
- 2、阀体、阀芯等零件均采用不锈钢材质,具有良好的防腐性能;
- 3、密封件采用自润滑材质,在无油润滑情况下也能动作自如,且密封可靠;
- 4、最小压力阀弹簧经强化处理,不易变形、疲劳,开启压力稳定。

Features:

1. Application: Water Lubricating Screw Compressor.
2. Parts of minimum pressure valve such as valve body, valve core and so on hold the anticorrosion feature using stainless steel material.
3. In the condition of no oil lubrication, minimum pressure valve can operate well and has a reliable sealing in dependence to self-lubricating sealing elements.
4. Strengthened spring is not easily deformed and fatigued making minimum pressure valve a reliable opening pressure.

型号说明 Model Description:

SMPV - 25 K - Y 3



技术参数

Technic Data

型号前缀Model	SMPV-20	SMPV-25	SMPV-32	SMPV-40	SMPV-50	SMPV-65	SMPV-80
口径(mm)Nominal Diameter(mm)	20	25	32	40	50	65	80
开启压力(bar)Opening Pressure(bar)	4.5 (可选 Optional 0.5 ~ 4.5)						
最高工作压力(bar)Max. Working Pressure(bar)	16						
工作介质温度(°C)Working Medium Temperature(°C)	-20 ~ 80						
进出口通道方向Direction of Inlet and Outlet				角式Right Angle Type			
阀体材质Material of Valve Body	不锈钢Stainless Steel						
安装尺寸Installation Dimension	请向我公司索取相关图纸Attached Drawing						

SMPV系列喷水螺杆空压机最小压力阀



MPV SERIES MINIMUM PRESSURE VALVE FOR OIL-INJECTED SCREW COMPRESSOR

MPV系列喷油螺杆 空压机最小压力阀

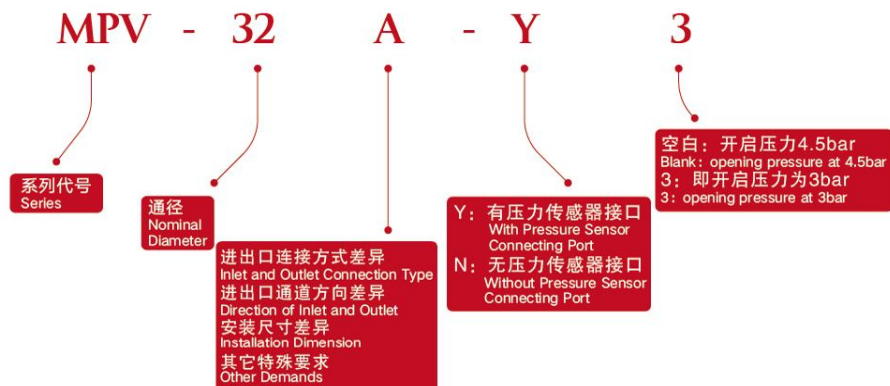
产品特性:

- 1、适用于喷油螺杆空气压缩机;
- 2、最小压力阀具备止回功能,密封件为FKM或PTFE,止回灵敏,密封可靠;
- 3、最小压力阀弹簧经强化处理,不易变形、疲劳,开启压力稳定;
- 4、多样化的安装连接方式,方便安装、维护。

Features:

1. Application: Oil-injected Screw Compressor
2. Minimum pressure valve takes FKM or PTFE as sealing elements featured with sensitive check function and reliable sealing.
3. Strengthened spring is not easily deformed and fatigued making minimum pressure valve a reliable opening pressure.
4. Diverse connection types provide more choice to installation and maintenance.

型号说明 Model Description:



技术参数

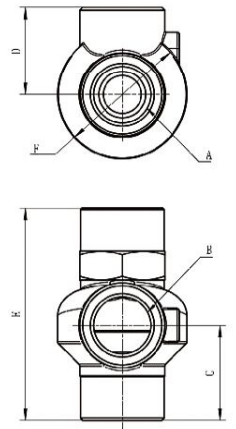
Technic Data

型号前缀Model	MPV-15	MPV-20	MPV-25	MPV-32	MPV-40	MPV-50
通径(mm)Nominal Diameter(mm)	15	20	25	32	40	50
适用排气量m ³ /min Discharge Rate	1~2	1.5~3	2.5~5	4.5~8	7~12	10~18
开启压力(bar)Opening Pressure(bar)	4.5 (可选 Optional 0.5~4.5, 部分型号可选 Partial Optional 4.5~21)					
最高工作压力(bar)Max. Working Pressure(bar)	16 (部分型号可选 Partial Optional 16~35)					
工作介质温度(°C)Working Medium Temperature(°C)	-20~130					
工作环境温度(°C)Working Environment Temperature(°C)	-20~60					
进气口方向Direction of Inlet and Outlet	角式 Right Angle Type	角式 Right Angle Type	角式/直通式 Right Angle Type/Through Type	角式/直通式 Right Angle Type/Through Type	角式 Right Angle Type	角式 Right Angle Type
阀体材质Material of Valve Body	铸铝 Cast Aluminium	铸铝/铸铁 Cast Aluminium/Cast Iron	铸铝/铸铁 Cast Aluminium/Cast Iron	铸铝/铸铁 Cast Aluminium/Cast Iron	铸铝 Cast Aluminium	铸铝/铸铁 Cast Aluminium/Cast Iron
密封件材质Seal Material	FKM					
型号前缀Model	MPV-65	MPV-80	MPV-100	MPV-125	MPV-160	
通径(mm)Nominal Diameter(mm)	65	80	100	120	160	
适用排气量m ³ /min Discharge Rate	16~30	28~45	40~60	55~80	80~120	
开启压力(bar)Opening Pressure(bar)	4.5 (可选 Optional 0.5~4.5, 部分型号可选 Partial Optional 4.5~21)					
最高工作压力(bar)Max. Working Pressure(bar)	16 (部分型号可选 Partial Optional 16~35)					
工作介质温度(°C)Working Medium Temperature(°C)	-20~130					
工作环境温度(°C)Working Environment Temperature(°C)	-20~60					
进气口方向Direction of Inlet and Outlet	角式 Right Angle Type	角式 Right Angle Type	角式/直通式 Right Angle Type/Through Type	角式 Right Angle Type	角式 Right Angle Type	角式 Right Angle Type
阀体材质Material of Valve Body	铸铝/铸铁 Cast Aluminium/Cast Iron	铸铁 Cast Iron	铸铁 Cast Iron	铸铝/铸铁 Cast Aluminium/Cast Iron	铸铝/铸铁 Cast Aluminium/Cast Iron	铸铁 Cast Iron
密封件材质Seal Material	FKM、PTFE					

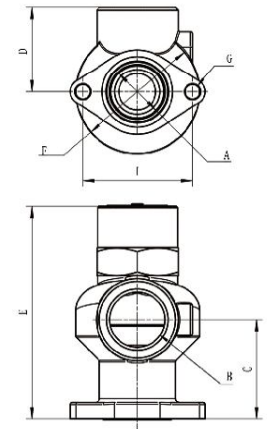
注: 表格中适用排气量数据是依据排气压力8bar得出的, 排气压力不等于8bar时, 最小压力阀适用排气量数据也会改变, 具体数据可联系我公司。
Note: Discharge rate is calculated according to 8 bar discharge pressure. When discharge pressure changes, the data is changed.

MPV SERIES

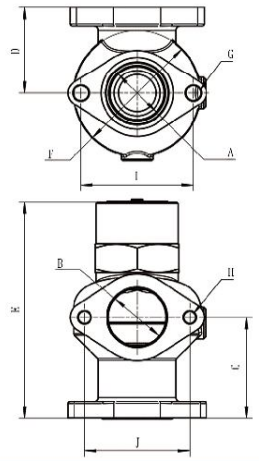
角式 (进口螺纹、出口螺纹)
Right Angle Type
Threaded Inlet, Threaded Outlet



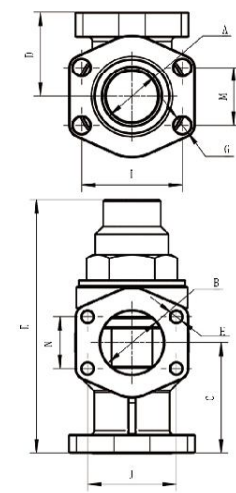
角式 (进口菱形法兰、出口螺纹)
Right Angle Type
Diamond Flange Inlet, Threaded Outlet



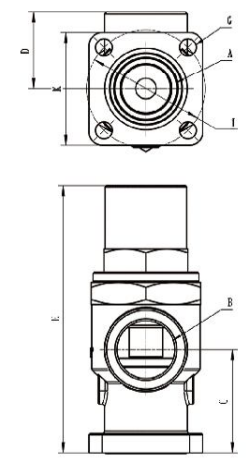
角式 (进口菱形法兰、出口菱形法兰)
Right Angle Type
Diamond Flange Inlet, Diamond Flange Outlet



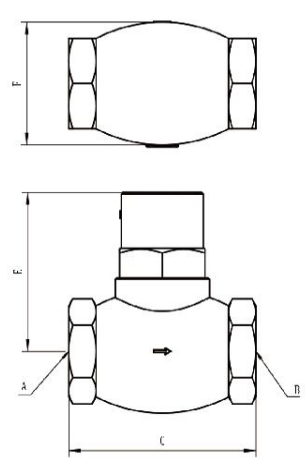
角式 (进口异形法兰、出口异形法兰)
Right Angle Type
Irregular Flange Inlet, Irregular Flange Outlet



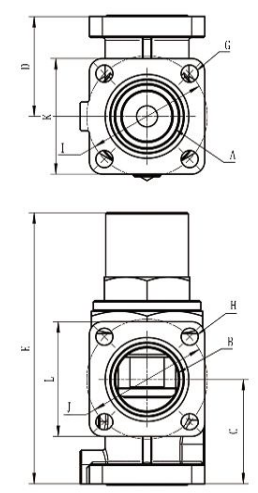
角式 (进口方法兰、出口螺纹)
Right Angle Type
Square Flange Inlet, Threaded Outlet



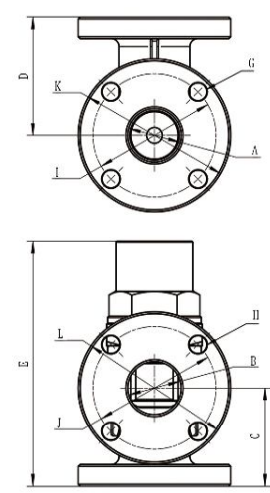
直通式 (进口螺纹、出口螺纹)
Through Type
Threaded Inlet, Threaded Outlet



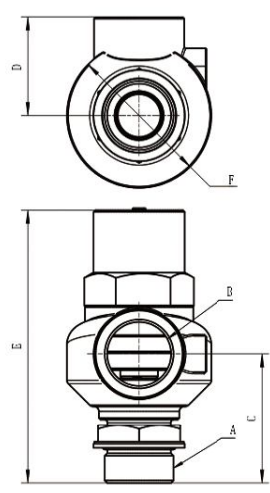
角式 (进口方法兰、出口方法兰)
Right Angle Type
Square Flange Inlet, Square Flange Outlet



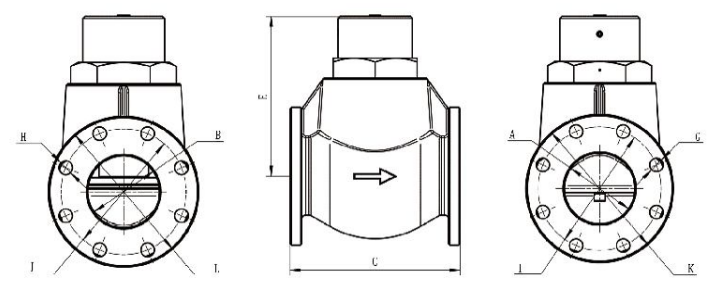
角式 (进口圆法兰、出口圆法兰)
Right Angle Type
Round Flange Inlet, Round Flange Outlet



角式 (进口调向螺纹接头、出口螺纹)
Right Angle Type
Regulated Directional Threaded Inlet, Threaded Outlet



直通式 (进口圆法兰、出口圆法兰)
Through Type
Round Flange Inlet, Round Flange Outlet



MPV SERIES

MPV SERIES

型号前缀 Model	进口接管方式 Inlet Connection Type	出口接管方式 Outlet Connection Type	进出口通道方向 Direction of Inlet and Outlet	A	B	C	D
MPV-15A	内螺纹 Female Thread	内螺纹 Female Thread	角式 Right Angle Type	G1/2	G1/2	32	38
MPV-20A	内螺纹 Female Thread	内螺纹 Female Thread	角式 Right Angle Type	G3/4	G3/4	40	40
MPV-20F	菱形法兰 Diamond Flange	内螺纹 Female Thread	角式 Right Angle Type	ø24.5	G3/4	41	40
MPV-20K	菱形法兰 Diamond Flange	菱形法兰 Diamond Flange	角式 Right Angle Type	ø24.5	ø25	41	40
MPV-20JF	调向螺纹接头 Regulated Directional Thread	内螺纹 Female Thread	角式 Right Angle Type	G3/4	G3/4	53	38
MPV-25A	内螺纹 Female Thread	内螺纹 Female Thread	角式 Right Angle Type	G1	G1	55	48
MPV-25B	内螺纹 Female Thread	内螺纹 Female Thread	直通式 Through Type	G1	G1	100	
MPV-25C	内螺纹 Female Thread	内螺纹 Female Thread	角式 Right Angle Type	G1	G1	55	48
MPV-25D	外螺纹 Male Thread	外螺纹 Male Thread	角式 Right Angle Type	R1 1/4	M36X2	64	52
MPV-25D-F	外螺纹 Male Thread	内螺纹 Female Thread	角式 Right Angle Type	R1 1/4	G1	64	52
MPV-25F	菱形法兰 Diamond Flange	内螺纹 Female Thread	角式 Right Angle Type	ø28.5	G1	60.5	48
MPV-25K	菱形法兰 Diamond Flange	菱形法兰 Diamond Flange	角式 Right Angle Type	ø28.5	ø30	60.5	48
MPV-25JF	调向螺纹接头 Regulated Directional Thread	内螺纹 Female Thread	角式 Right Angle Type	G1	G1	69	48
MPV-32A	内螺纹 Female Thread	内螺纹 Female Thread	角式 Right Angle Type	G1 1/4	G1 1/4	65	60
MPV-32B	内螺纹 Female Thread	内螺纹 Female Thread	直通式 Through Type	G1 1/2	G1 1/2	127	
MPV-32C	内螺纹 Female Thread	内螺纹 Female Thread	角式 Right Angle Type	G1 1/4	G1 1/4	65	60
MPV-32D	外螺纹 Male Thread	外螺纹 Male Thread	角式 Right Angle Type	R1 1/2	M52X2	72.5	65
MPV-32D-F	外螺纹 Male Thread	内螺纹 Female Thread	角式 Right Angle Type	R1 1/2	G1 1/4	72.5	65
MPV-32F	菱形法兰 Diamond Flange	内螺纹 Female Thread	角式 Right Angle Type	ø37.5	G1 1/4	70	60
MPV-32K	菱形法兰 Diamond Flange	菱形法兰 Diamond Flange	角式 Right Angle Type	ø37.5	ø40	70	60
MPV-32JF	调向螺纹接头 Regulated Directional Thread	内螺纹 Female Thread	角式 Right Angle Type	G1 1/4	G1 1/4	79	60
MPV-32T	方法兰 Square Flange	方法兰 Square Flange	角式 Right Angle Type	ø36	ø36	80	80
MPV-40A	内螺纹 Female Thread	内螺纹 Female Thread	角式 Right Angle Type	G1 1/2	G1 1/2	68	60
MPV-40F	方法兰 Square Flange	内螺纹 Female Thread	角式 Right Angle Type	ø48	G1 1/2	80	60
MPV-40K	方法兰 Square Flange	方法兰 Square Flange	角式 Right Angle Type	ø48	ø48	80	76
MPV-50A	内螺纹 Female Thread	内螺纹 Female Thread	角式 Right Angle Type	G2	G2	78	70
MPV-50F	圆法兰 Round Flange	圆法兰 Round Flange	角式 Right Angle Type	ø54	ø54	100	120
MPV-50F-J	方法兰 Square Flange	方法兰 Square Flange	角式 Right Angle Type	ø54	ø54	100	120
MPV-50T	方法兰 Square Flange	方法兰 Square Flange	角式 Right Angle Type	ø53	ø56	58	92
MPV-65A	内螺纹 Female Thread	内螺纹 Female Thread	角式 Right Angle Type	G2 1/2	G2 1/2	94	85
MPV-65F	圆法兰 Round Flange	圆法兰 Round Flange	角式 Right Angle Type	ø70	ø70	103	150
MPV-65S	圆法兰 Round Flange	圆法兰 Round Flange	角式 Right Angle Type	ø70	ø70	112	112
MPV-65T	异形法兰 Irregular Flange	异形法兰 Irregular Flange	角式 Right Angle Type	ø71	ø76	132	101.5
MPV-80F	圆法兰 Round Flange	圆法兰 Round Flange	角式 Right Angle Type	ø80	ø80	125	150
MPV-80S	圆法兰 Round Flange	圆法兰 Round Flange	角式 Right Angle Type	ø80	ø80	125	150
MPV-100T	异形法兰 Irregular Flange	异形法兰 Irregular Flange	角式 Right Angle Type	ø104	ø102	143.8	143.3
MPV-100B	圆法兰 Round Flange	圆法兰 Round Flange	直角式 Through Type	ø100	ø100	260	
MPV-125F	圆法兰 Round Flange	圆法兰 Round Flange	角式 Right Angle Type	ø130	ø125	160	170
MPV-160F	圆法兰 Round Flange	圆法兰 Round Flange	角式 Right Angle Type	ø160	ø160	180	194

MPV SERIES

E	F	G	H	I	J	K	L	M	N
74	ø40								
97	ø50								
98	ø50	2-ø10.5		67					
98	ø50	2-ø10.5	2-M10	67	60				
113	ø50								
112	ø64								
80.5	70								
122.5	ø64								
125.5	ø64								
125.5	ø64								
117.5	ø64	2-ø10.5		67					
117.5	ø64	2-ø10.5	2-M10	67	60				
133.5	ø64								
145	ø88								
108	84								
155	ø88								
160	ø88								
160	ø88								
150	ø88	2-ø10.5		78					
150	ø88	2-ø10.5	2-M10	78	73				
166	ø88								
172		4-ø14	4-M12	70X36	70X36	96X80	96X80		
195	ø84								
207		4-ø13		ø92		88X88			
207		4-ø13	4-ø13	ø92	ø92	88X88	88X88		
227	ø95								
249		4-ø18	4-ø18	ø125	ø125	ø155	ø155		
249		4-ø14	4-ø14	ø125	ø125	120X120	120X120		
207		4-ø19	4-M16	118X83	93X60	152X118	126X95		
278	ø128								
287		4-ø18	4-ø18	ø145	ø145	ø185	ø185		
296		4-ø18	6-ø18	ø145	ø140	ø180	ø170		
303		4-ø20.6	4-M16	120.6	106.3			69.9	61.9
309		8-ø18	8-ø18	ø160	ø160	ø192	ø192		
309		6-ø18	6-ø18	ø165	ø165	ø192	ø192		
319		4-ø18	4-M16	152.4	130.2			92.1	77.8
244		8-ø19	8-ø19	ø175	ø175	ø210	ø210		
337.5		8-ø18	8-ø18	ø210	ø210	ø240	ø250		
339.5		8-ø22	8-ø22	ø240	ø240	ø275	ø275		

RT SERIES PROPORTIONAL VALVE FOR SCREW COMPRESSOR

RT系列螺杆 空压机正比例阀

产品特性:

- 1、适用于喷油螺杆空气压缩机;
- 2、输入压力达到设定值时, 出口开始输出压力, 输出压力与输入压力呈正比例;
- 3、采用非圆截面弹簧, 许用应力更大, 弹簧力稳定, 寿命长。

Features:

1. Application: Oil-injected Screw Compressor
2. When input pressure reaches the set value, output pressure will be in direct proportion to the input pressure.
3. Non-round section spring corresponds to higher allowable stress, stable spring force and long life span.



技术参数

Technic Data

型号前缀Model	RTL-1	RTH-2A	RTH-2B
直径(mm)Nominal Diameter(mm)	5	8	8
使用压力范围(bar)Working Pressure Range(bar)	3 ~ 10	10 ~ 20	20 ~ 38
最高耐受压力(bar)Max. Resisting Pressure(bar)	16	25	40
工作介质温度(°C)Working Medium Temperature(°C)		-20 ~ 120	
进出口规格Connection Type of Inlet and Outlet	G $1/8$	G $1/4$	G $1/4$
安装尺寸Installation Dimension	请向我公司索取相关图纸 Attached Drawing		

CTV SERIES COMBINATION VALVE FOR SCREW COMPRESSOR

CTV系列螺杆 空压机组组合阀

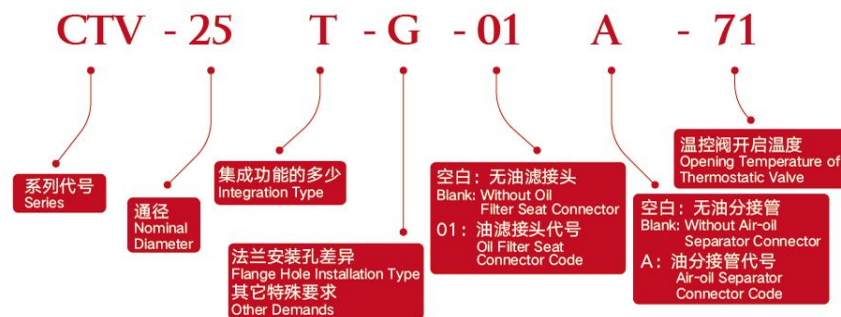
产品特性:

- 1、适用于喷油螺杆空气压缩机;
- 2、组合阀集成油分座、油滤座、最小压力阀、温控阀于一体, 结构紧凑;
- 3、温控阀采用进口温控元件, 性能稳定可靠, 使用寿命长;
- 4、最小压力阀弹簧经强化处理, 不易变形、疲劳, 开启压力稳定。

Features:

1. Application: Oil-injected Screw Compressor
2. Combination valve with a compact structure integrates air-oil separator seat, oil filter seat, minimum pressure valve and thermostatic valve.
3. Imported thermostatic element is featured of long life span, stable and reliable performance.
4. Strengthened spring is not easily deformed and fatigued making minimum pressure valve a reliable opening pressure.

型号说明 Model Description:





CTV SERIES

技术参数 Technic Data

型号前缀Model	CTV-15A	CTV-15T	CTV-20A	CTV-20T	CTV-20D	CTV-25A	CTV-25T
通径(mm)Nominal Diameter(mm)	15	15	20	20	20	25	25
开启压力(bar)Opening Pressure(bar)	4.5						
最高工作压力(bar)Max. Working Pressure(bar)	16						
工作介质温度(°C)Working Medium Temperature(°C)	-20 ~ 130						
工作环境温度(°C)Working Environment Temperature(°C)	-20 ~ 60						
集成最小压力阀Integration of Minimum Pressure Valve	●	●	●	●	●	●	●
集成油分座Integration of Air-oil Separator Seat	●	●	●	●	●	●	●
集成油滤座Integration of Oil Filter Seat	●	●	●	●	—	●	●
集成温控阀Integration of Thermostatic Valve	—	●	—	●	—	—	●
混合油气进口Inlet of Mixed Oil and Gas	法兰Flange						
最小压力阀出口Outlet of Minimum Pressure Valve	G ¹ / ₂	G ¹ / ₂	G ³ / ₄	G ³ / ₄	G ³ / ₄	G ¹ / ₄	G ¹ / ₄
润滑油进口Inlet of Lubricated Oil	G ¹ / ₄	G ¹ / ₄	G ¹ / ₂	G ¹ / ₂	—	G ³ / ₄	G ³ / ₄
润滑油出口Outlet of Lubricated Oil	G ¹ / ₄	G ¹ / ₄	G ¹ / ₂	G ¹ / ₂	—	G ³ / ₄	G ³ / ₄
油分接头Air-oil Separator Connector	■	■	■	■	■	▲	▲
油滤接头Oil Filter Seat Connector	★	★	★	★	—	★	★
温控阀动作温度范围Motion Temperature Range Of Thermostatic Valve	—	◆	—	◆	—	—	◆
安装尺寸Installation Dimension	请我公司索取相关图纸Attached Drawing						

● 标配With — 无Without ■、▲ 油分接头注释见附表Attached List Optional Air-oil Separator Connector
 ★ 油滤接头注释见附表Attached List Optional Oil Filter Seat Connector
 ◆ 温控阀动作温度范围见附表Attached List Optional Motion Temperature Range of Thermostatic Valve

油滤接头★ Oil Filter Seat Connector

订货代号Code	螺纹规格Threaded Description
01	1-12 UNF
02	3/4-16 UNF
03	0.97-20 UNEF
04	M20X1.5
05	M27X1.5
06	M26X1.5
07	M23X1.5
08	M24X1.5
09	M26X1.75
10	1-20 UNEF
11	G ³ / ₄
12	1 1/8-16 UN
13	M26X2
14	1-14 UNF

油分接头■ Air-oil Separator Connector

订货代号Code	螺纹规格Threaded Description
A	M24X1.5
B	M22X1.5
C	M26X1.5
D	M24X1.75
E	M23X1.5
H	M22X1.75

油分接头▲ Air-oil Separator Connector

订货代号Code	螺纹规格Threaded Description
A	M39X1.5
B	M32X1.5
C	M32X1.75
D	M40X1.75
E	M33X1.75
F	M39X1.75

温控阀动作温度范围◆ Motion Temperature Range of Thermostatic Valve

订货代号Code	动作温度范围Motion Temperature Range
60	60°C ~ 71°C
71	71°C ~ 83°C
83	83°C ~ 95°C

技术参数 Technic Data

型号前缀Model	CTV-25F	CTV-25H	CTV-32A	CTV-32T	CTV-32F	CTV-40H
通径(mm)Nominal Diameter(mm)	25	25	32	32	32	40
开启压力(bar)Opening Pressure(bar)	4.5					
最高工作压力(bar)Max. Working Pressure(bar)	16					
工作介质温度(°C)Working Medium Temperature(°C)	-20 ~ 130					
工作环境温度(°C)Working Environment Temperature(°C)	-20 ~ 60					
集成最小压力阀Integration of Minimum Pressure Valve	●	●	●	●	●	●
集成油分座Integration of Air-oil Separator Seat	●	●	●	●	●	●
集成油滤座Integration of Oil Filter Seat	—	—	●	●	—	—
集成温控阀Integration of Thermostatic Valve	—	—	—	●	—	—
混合油气进口Inlet of Mixed Oil and Gas	法兰Flange					
最小压力阀出口Outlet of Minimum Pressure Valve	G1	G ¹ / ₄	G ¹ / ₄	G ¹ / ₄	G ¹ / ₂	法兰Flange
润滑油进口Inlet of Lubricated Oil	—	—	G ³ / ₄	G ³ / ₄	—	—
润滑油出口Outlet of Lubricated Oil	—	—	G ³ / ₄	G ³ / ₄	—	—
油分接头Air-oil Separator Connector	▲	▲	▲	▲	▲	▲
油滤接头Oil Filter Seat Connector	—	—	★	★	—	—
温控阀动作温度范围Motion Temperature Range Of Thermostatic Valve	—	—	—	◆	—	—
安装尺寸Installation Dimension	请向我公司索取相关图纸Attached Drawing					

● 标配With — 无Without ■、▲ 油分接头注释见附表Attached List Optional Air-oil Separator Connector
 ★ 油滤接头注释见附表Attached List Optional Oil Filter Seat Connector
 ◆ 温控阀动作温度范围见附表Attached List Optional Motion Temperature Range of Thermostatic Valve

CTV SERIES

YLF/K/H/Z SERIES THERMOSTATIC VALVE COMBINED WITH OIL FILTER SEAT FOR SCREW COMPRESSOR

YLF/K/H/Z系列螺杆空压机温控油滤座

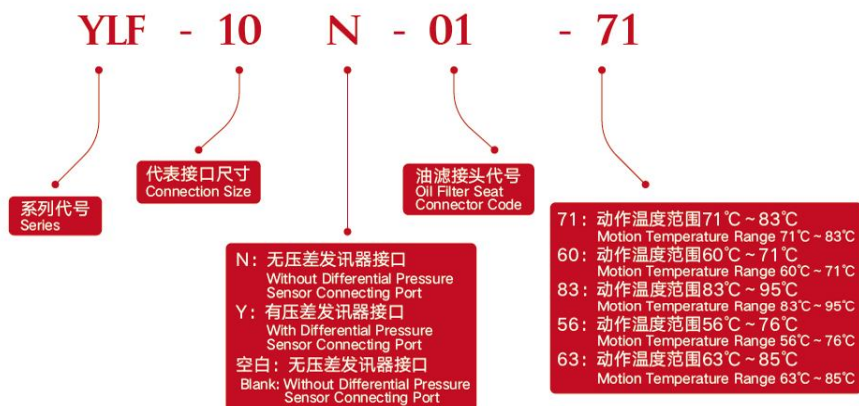
产品特性:

- 1、适用于喷油螺杆空气压缩机;
- 2、集成温控阀和油滤座为一体, 相比单体温控阀, 管路数量少, 泄漏点少;
- 3、采用进口温控元件, 性能稳定可靠, 使用寿命长;
- 4、YLF、YLK、YLH系列属分流型式, 控制温控阀进口介质温度;
- 5、YLZ系列属混流型式, 控制温控阀出口介质温度;
- 6、温控阀初始状态即有一小部分通道与冷却器相通, 可以有效控制开机时升温速度, 防止排气温度冲高。

Features:

1. Application: Oil-injected Screw Compressor
2. Compared with single thermostatic valve, integration of thermostatic valve and oil filter seat has the feature of less pipeline and leakage point.
3. Imported thermostatic element is featured of long life span, stable and reliable performance.
4. YLF, YLK and YLH series have a shunt mode to control medium temperature of thermostatic valve inlet.
5. YLZ series have a mixed-flow mode to control medium temperature of thermostatic valve outlet.
6. There's a small part communicating with cooler in thermostatic valve's initial condition. It can effectively control temperature rise speed during start-up and prevent discharge temperature from rising rapidly.

型号说明 Model Description:



油滤接头★
Oil Filter Seat Connector

油滤接头☆ Oil Filter Seat Connector		油滤接头★ Oil Filter Seat Connector	
订货代号 Code	螺纹规格 Threaded Description	订货代号 Code	螺纹规格 Threaded Description
01	1 1/2-16 UN	01	1-12 UNF
02	1 1/8-16 UN	02	3/4-16 UNF
03	M38X2	03	0.97-20 UNEF
04	M40X2	04	M20X1.5
05	M38X1.5	05	M27X1.5
06	M30X1.5	06	M26X1.5
07	M39X1.75	07	M23X1.5
08	G1 1/4	08	M24X1.5
09	M40X1.75	09	M26X1.75
10	M40X1.5	10	1-20 UNF
11	1 3/4-12UN	11	G3/4
12	M39X1.5	12	1 1/8-16 UN
		13	M26X2
		14	1-14 UNF

技术参数 Technic Data

型号前缀 Model	YLF-4	YLF-6	YLF-8	YLF-10	YLK-12	YLH-4	YLH-6	YLH-8	YLH-10	YLZ-8	YLZ-10
通径(mm) Nominal Diameter(mm)	15	15	23	34	34	15	15	23	28	26	26
动作温度范围(°C) Motion Temperature Range(°C)	60 ~ 71, 71 ~ 83, 83 ~ 95									56 ~ 76, 63 ~ 85	
最高工作压力(bar) Max. Working Pressure(bar)	16										
工作介质温度(°C) Working Medium Temperature(°C)	-20 ~ 120										
进出口规格 Connection Type of Inlet and Outlet	G1 1/2	G3/4	G1	G1 1/4	G1 1/2	G1 1/2	G3/4	G1	G1 1/4	G1	G1 1/4
油滤接头 Oil Filter Seat Connector	★	★	☆	☆	☆	★	★	☆	☆	☆	☆
材质 Material	氧化铝合金、黄铜、氟橡胶、不锈钢Aluminium Alloy Oxide, Brass, Fluororubber and Stainless Steel										
安装尺寸 Installation Dimension	请向我公司索取相关图纸Attached Drawing										

★、☆油滤接头注释见附表Attached List Optional Oil Filter Seat Connector

YL SERIES OIL FILTER SEAT FOR SCREW COMPRESSOR

YL系列螺杆空压机油过滤器座

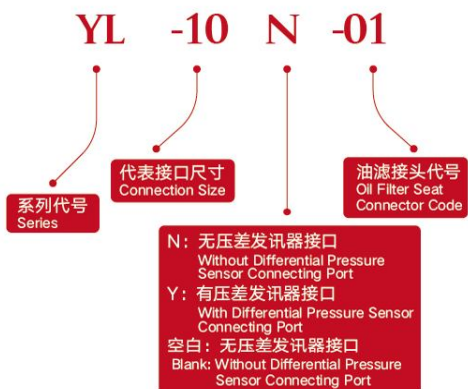
产品特性:

- 1、适用于喷油螺杆空气压缩机;
- 2、油过滤器座表面阳极氧化处理;
- 3、采用低压铸造工艺,使用中不会出现渗漏。

Features:

1. Application: Oil-injected Screw Compressor
2. Anodizing Treatment on Surface of Oil Filter Seat
3. No leakage occurs during usage with low pressure casting technique.

型号说明 Model Description:



技术参数

Technic Data

型号前缀Model	YL-2	YL-4	YL-6	YL-8	YL-10	YLT-8	YLT-10
进口规格Inlet Connection Type	G ¹ / ₄	G ¹ / ₂	G ³ / ₄	G1	G1 ¹ / ₄	G1	G2或法兰 G2 or Flange
出口规格Outlet Connection Type	G ¹ / ₄	G ¹ / ₂	G ³ / ₄	G1	G1 ¹ / ₄	G1	G2或法兰 G2 or Flange
最高工作压力(bar)Max. Working Pressure(bar)	16						
油滤接头Oil Filter Seat Connector	★	★	★	★	☆	★	☆
材质Material	氧化铝合金、镀锌碳钢Aluminium Alloy Oxide, Galvanized Carbon Steel						
安装尺寸Installation Dimension	请向我公司索取相关图纸Attached Drawing						
型号前缀Model	YLT-12	YL-4S	YL-6S	YL-10S	YL-8F	YL-10F	
进口规格Inlet Connection Type	法兰Flange	法兰Flange	法兰Flange	法兰Flange	法兰Flange	法兰Flange	
出口规格Outlet Connection Type	法兰Flange	G ¹ / ₂	G ³ / ₄	G1 ¹ / ₄	法兰Flange	法兰Flange	
最高工作压力(bar)Max. Working Pressure(bar)	16						
油滤接头Oil Filter Seat Connector	☆	★	★	☆	★	☆	
材质Material	氧化铝合金、镀锌碳钢Aluminium Alloy Oxide, Galvanized Carbon Steel						
安装尺寸Installation Dimension	请向我公司索取相关图纸Attached Drawing						

★、☆油滤接头注释见附表Attached List Optional Oil Filter Seat Connector

油滤接头★ Oil Filter Seat Connector

订货代号Code	螺纹规格Threaded Description
01	1-12 UNF
02	³ / ₄ -16 UNF
03	0.97-20 UNEF
04	M20X1.5
05	M27X1.5
06	M26X1.5
07	M23X1.5
08	M24X1.5
09	M26X1.75
10	1-20 UNEF
11	G ³ / ₄
12	1 ¹ / ₈ -16 UN
13	M26X2
14	1-14 UNF

油滤接头☆ Oil Filter Seat Connector

订货代号Code	螺纹规格Threaded Description
01	1 ¹ / ₂ -16 UN
02	1 ¹ / ₈ -16 UN
03	M38X2
04	M40X2
05	M38X1.5
06	M30X1.5
07	M39X1.75
08	G1 ¹ / ₄
09	M40X1.75
10	M40X1.5
11	1 ³ / ₄ -12UN
12	M39X1.5

HY SERIES OIL-RETURN CHECK VALVE FOR SCREW COMPRESSOR

HY系列螺杆空压机回油单向阀

产品特性:

- 1、适用于喷油螺杆空气压缩机;
- 2、采用氟橡胶球,密封可靠;
- 3、设置有止回弹簧,对安装方向无要求;
- 4、通径规格丰富,可以满足各种通径要求;
- 5、视镜采用特供特种塑料,具有优异的耐温、耐压、耐化学性能。

Features:

1. Application: Oil-injected Screw Compressor
2. It has a reliable sealing with fluororubber ball.
3. It has check spring and can install not in a certain direction.
4. It can meet demands of diverse nominal diameter.
5. Oil sight glass of special plastic has feature of temperature, pressure and chemical resistance.

技术参数

Technic Data

型号前缀Model	HY-1G	HYD-1	HYS-1	HYS-1A	HYS-1B	HYS-1C
通径(mm)Nominal Diameter(mm)	0.5 ~ 3可选 Optional 0.5 ~ 3					
介质流动情况Medium Flow	不可视Invisible		可视Visible			
最高工作压力(bar)Max. Working Pressure(bar)	16					
工作介质Working Medium	螺杆空压机用矿物油、半合成油、合成油,压缩空气 Mineral Oil, Semi Synthetic Oil, Synthetic Oil and Compressed Air for Screw Compressor					
工作介质温度(°C)Working Medium Temperature(°C)	-20 ~ 120					
进口规格Inlet Connection Type	R $1/4$	Rp $1/8$	Rp $1/8$	Rp $1/8$	R $1/4$	R $1/4$
出口规格Outlet Connection Type	Rp $1/8$	Rp $1/8$	Rp $1/8$	M12X1.5	M12X1.5	Rp $1/8$
材质Material	黄铜、氟橡胶、不锈钢Brass, Fluororubber and Stainless Steel					
安装尺寸Installation Dimension	请向我公司索取相关图纸Attached Drawing					

型号说明 Model Description:

HYS - 1 - DN1.0



TV SERIES THERMOSTATIC VALVE FOR SCREW COMPRESSOR

TV系列螺杆空压机温控阀

产品特性:

- 1、适用于喷油螺杆空气压缩机;
- 2、采用进口温控元件,性能稳定可靠,使用寿命长;
- 3、温控阀属分流型式,控制温控阀进口介质温度;
- 4、TV系列温控阀初始状态即有一小部分通道与冷却器相通,可以有效控制开机时升温速度,防止排气温度冲高。

Features:

1. Application: Oil-injected Screw Compressor
2. Imported thermostatic element is featured of long life span, stable and reliable performance.
3. It has a shunt mode to control medium temperature of thermostatic valve inlet.
4. There's a small part communicating with cooler in TV series' initial condition. It can effectively control temperature rise speed during start-up and prevent discharge temperature from rising rapidly.

型号说明 Model Description:

TV - 10 - 71



技术参数

Technic Data

型号前缀Model	TV-4	TV-6	TV-8	TV-10	TV-12	TV-16	TVL-6	TVL-8	TVL-10	TVL-12
通径(mm)Nominal Diameter(mm)	15	15	23	34	34	50	20	25	32	40
动作温度范围(°C)Motion Temperature Range(°C)	60 ~ 71, 71 ~ 83, 83 ~ 95						71 ~ 80		66 ~ 77, 83 ~ 93	
最高工作压力(bar)Max. Working Pressure(bar)	16									
工作介质温度(°C)Working Medium Temperature(°C)	-20 ~ 120									
进出口规格Connection Type of Inlet and Outlet	G $1/2$	G $3/4$	G1	G $1 1/4$	G $1 1/2$	法兰 Flange	G $3/4$	G1	G $1 1/4$	G $1 1/2$
材质Material	氧化铝合金、球墨铸铁、黄铜、氟橡胶、不锈钢 Aluminum Alloy Oxide, Spheroidal Graphite Cast Iron, Brass, Fluororubber and Stainless Steel									
安装尺寸Installation Dimension	请向我公司索取相关图纸Attached Drawing									

TV SERIES

YF SERIES AIR-OIL SEPARATOR SEAT FOR SCREW COMPRESSOR

YF系列螺杆 空压机油气分离器座

产品特性:

- 1、适用于喷油螺杆空气压缩机;
- 2、油气分离器座表面阳极氧化处理;
- 3、采用低压铸造工艺,使用中不会出现渗漏。

Features:

1. Application: Oil-injected Screw Compressor
2. Anodizing Treatment on Surface of Air-oil Separator Seat
3. No leakage occurs during usage with low pressure casting technique.

型号说明 Model Description:



油分接头 ■
Air-oil Separator Connector

订货代号 Code	螺纹规格 Threaded Description
A	M24X1.5
B	M22X1.5
C	M26X1.5
D	M24X1.75
E	M23X1.5
H	M22X1.75

油分接头 ▲
Air-oil Separator Connector

订货代号 Code	螺纹规格 Threaded Description
A	M39X1.5
B	M32X1.5
C	M32X1.75
D	M40X1.75
E	M33X1.75
F	M39X1.75

技术参数

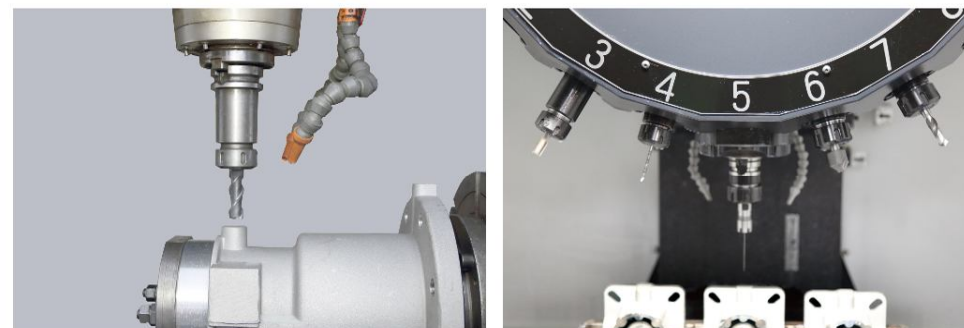
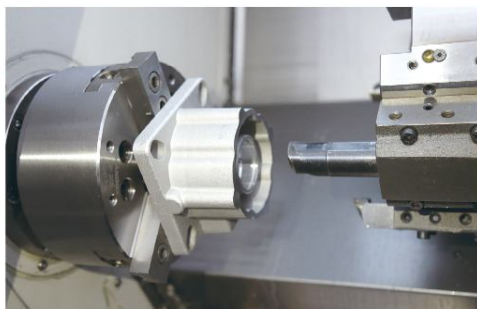
Technic Data

型号前缀 Model	YF-6	YF-8	YF-10	YFZ-6	YFZ-8	YFZ-10
进口规格 Inlet Connection Size	G ³ / ₄	G1	G1 ¹ / ₄	G ³ / ₄	G1	G1 ¹ / ₄
出口规格 Outlet Connection Size	G ³ / ₄	G1	G1 ¹ / ₄	G ³ / ₄	G1	G1 ¹ / ₄
回油口规格 Oil-return Hole Size	G ¹ / ₄	G ¹ / ₄	G ¹ / ₄	G ¹ / ₈	G ¹ / ₈	G ¹ / ₈
最高工作压力 (bar) Max. Working Pressure (bar)	16					
旋装油分芯方向 Air-oil Separator Core Tube Installation Direction	油分芯在油分座下方 Below Air-oil Separator			油分芯在油分座上方 Above Air-oil Separator		
油分接头 Air-oil Separator Connector	■	▲	▲	■	▲	▲
材质 Material	氧化铝合金、镀锌碳钢 Aluminium Alloy Oxide, Galvanized Carbon Steel					
安装尺寸 Installation Dimension	请向我公司索取相关图纸 Attached Drawing					

■、▲ 油分接头注释见附表 Attached List Optional



数控车床
CNC Lathe



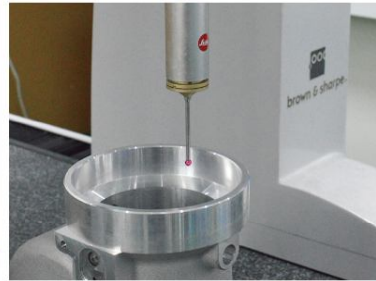
加工中心
Machining Center

THE BETTER FACILITY YOU OWN
THE BETTER PRODUCTS YOU HAVE

工欲善其事 必先利其器

阳极氧化自动生产线
Anodic Oxidation
Automatic Production Line





三坐标测量仪
Three-coordinates Measuring Instrument



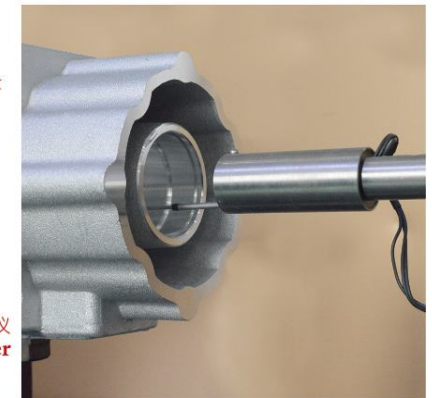
直读光谱分析仪
CCD Optical Emission Spectrometer



万能试验机
Universal Test Machine



粗糙度测量仪
Roughmeter



DETAILS MAKE PERFECT
细节 造就完美

我们有专业的质量管理团队和检测中心，检测设备有三坐标测量仪、直读光谱分析仪、盐雾试验机、万能试验机、橡胶老化试验箱、粗糙度测量仪、影像测量仪、布氏硬度计、弹簧试验机、水压测试机等。
We have a professional quality team and testing instruments, such as Three-coordinates Measuring Instrument, CCD Optical Emission Spectrometer, Salt Spray Test Machine, Universal Test Machine, Aging Tester, Roughmeter, Image Measuring Instrument, Brinell Hardness Tester, Spring Testing Machine, Hydraulic Tester and so on.



ONE HEART MAKES US GO
FURTHER
ONE MORALITY MAKES US
BE TOGETHER

同心才能走得更远
同德才能走得更近



**SURVIVE ON QUALITY
DEVELOP BY INNOVATION**
以质量求生存 以创新求发展